



**INNOVCARE**

An AAL Project

[HOME](#)

[The Project](#)

[The Consortium](#)

[News](#)

[Contact US](#)

We should place here, and possibly in all pages adequate pictures or illustrations

*INNOVCARE aims to provide a novel support system with personalized assisted living ICT services for older adults in order to prolong their autonomy, improve their physical, mental and emotional wellbeing, prevent further dependence, and facilitate networks to support self-care. Better self-management does lead to healthier patients, more appropriate health service usage, and fewer unplanned hospital admissions.*

- **Older adults:** to enhance and promote behaviour change in older adults: going from passive patients to well-informed, activated, engaged and committed individuals. In addition, the system aims at empowering older adults in self-management and detecting functional decline (trend analysis) in an early stage.
- **Informal caregivers:** to facilitate monitoring and support of independent living in older adults by training informal caregivers to use web services, apps and interactive tools allowing them to communicate, share their experiences and support each other while keeping active in the society through their daily activities.
- **Formal caregivers:** to empower, train and support older adults in enhancing their autonomy.



Description of Telemonitoring KIT

[Read more](#)



Description of the Apps

[Read more](#)



Description of the Platform

[Read more](#)

New logos can especially be created for the 4 key modules



The Caregivers Portal (CGP) and the Formal care Givers

[Read more](#)

Clicking here will get them the whole text about this module, which will be placed in this page, and that it allows to go back to the top of the page

## LOGOS OF ALL PARTNERS, the NCPs, EU and AOL – in a nice way



**INNOVCARE**  
An AAL Project

[HOME](#)

[The Project](#)

[The Consortium](#)

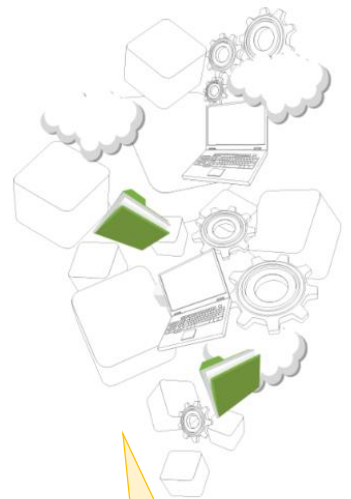
[News](#)

[Contact US](#)

## The Project

The project focuses on ..... DESCRIPTION

- **TELEMONITORING KIT:** Description
- **INNOVCARE SENIOR COMPANION:** Description
- **SUPPORT APPLICATIONS:** Description
- **CAREGIVER PORTAL** Description



A new sketch for elders and sensors

LOGOS OF ALL PARTNERS, the NCPs, EU and AOL – in a nice way



**INNOVCARE**  
An AAL Project

HOME

The Project

The Consortium

News

Contact US

## The Consortium

We have a description and link to website for all partners

Wellness Telecom works to put the potential of telecommunications services and technology at the service of more than 100 customers for improving competitiveness, productivity and security of IT processes.

Wellness Telecom operates in two lines of business – Systems, networking and cloud computing, and Smart Cities- with a definite international focus, projects in over 50 countries, and innovation as our company growth engine.

We have headquarters in Seville, Malaga, and commercial offices in Madrid and a team in Mexico City.



**Luis Alcántara García**

Consortium Coordinator

[www.wellnesstelecom.es](http://www.wellnesstelecom.es)

**Smart Homes** (SmH) is the Dutch expert centre on home automation, smart living and e-health. It acts as an independent and intermediary organisation in the market of technology & ageing. Sm18art Homes participated in many projects on ambient assisted living, most of which dealing with context aware software based services. Generally, Smart Homes exploits results of these projects through its partner community, educational courses and consultancy work. Smart Homes has strong dissemination activities through conferences, an annual trade fair, its Magazine, newsletter and website. In INNOVCARE, SmH is responsible for **TO ADD**



**Wil Rinjen**

[www.smart-homes.nl](http://www.smart-homes.nl)

Rest of companies to be placed here

LOGOS OF ALL PARTNERS, the NCPs, EU and AOL – in a nice way

HOME

The Project

The Consortium

News

Contact US



**INNOVCARE**  
An AAL Project

[HOME](#)

[The Project](#)

[The Consortium](#)

[News](#)

[Contact US](#)

## PRESS RELEASES

Kick Off Project in Seville

PR has to be issued and linked

Later we add any other PR

Linked to any mentioning of the project

SmH is the only one that did it

to be updated

## PARTICIPATION IN DISSEMINATION EVENTS

Smart Homes – Innovate – Integrated Care

## PUBLIC DELIVERIES

1. INNOVCARE – Project Management Plan
2. INNOVCARE – Any other public delivery

Public deliveries linked

As we go on we add more

LOGOS OF ALL PARTNERS, the NCPs, EU and AOL – in a nice way

[HOME](#)

[The Project](#)

[The Consortium](#)

[News](#)

[Contact US](#)



**INNOVCARE**  
An AAL Project

[HOME](#)

[The Project](#)

[The Consortium](#)

[News](#)

[Contact US](#)

## Contact US

Name

Email

Message

**Send**

### Contact Information

Consortium Coordinator  
[innovcare@wtelecom.es](mailto:innovcare@wtelecom.es)

LOGOS OF ALL PARTNERS, the NCPs, EU and AOL – in a nice way

[HOME](#)

[The Project](#)

[The Consortium](#)

[News](#)

[Contact US](#)